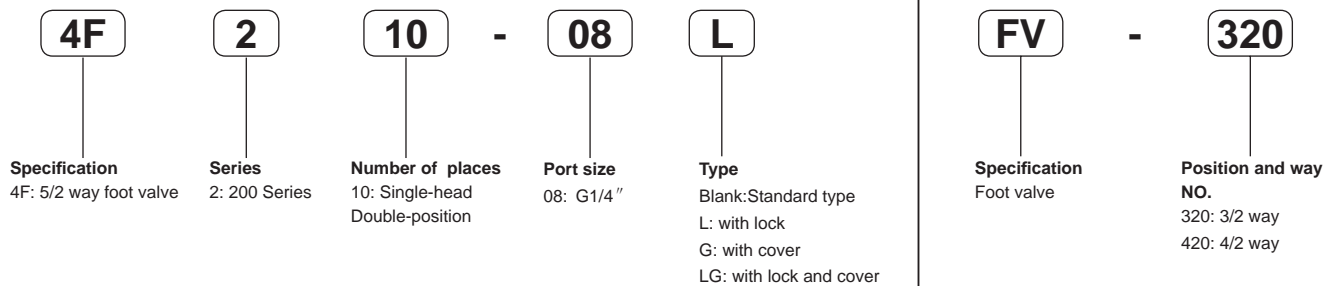


## Foot Valve



### Ordering code



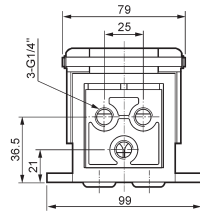
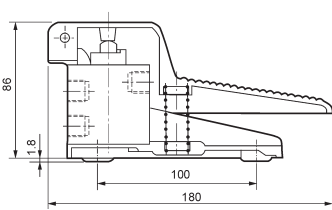
### Specifications

Model	4F210-08	4F210-08L	4F210-08G	4F210-08LG	FV420	FV320
Fluid	40 micron filtered air					
Position and way NO.	5/2 way			4/2 way		3/2 way
Operation	Direct drive type					
Port size	Air inlet=Air outlet=Exhaust=G1/4"				Air inlet=Air outlet=G1/4" Exhaust=G1/8"	
Operating pressure	0~0.8MPa					
Operating temperature	0~60℃					

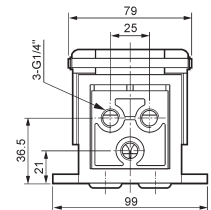
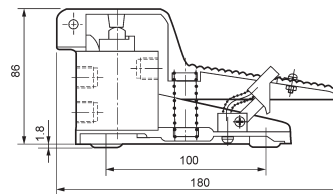
## Foot Valve

### ● Dimensions

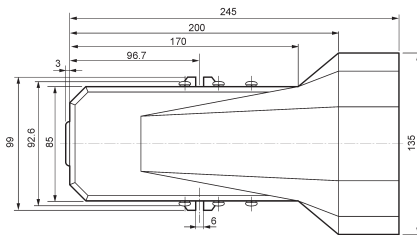
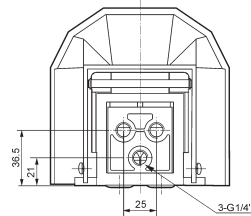
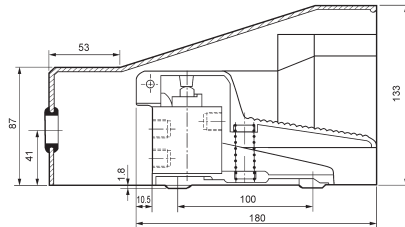
4F210-08



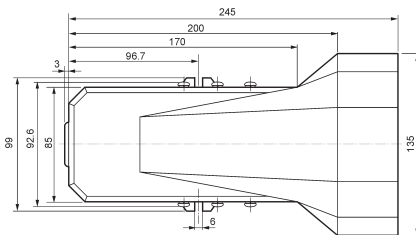
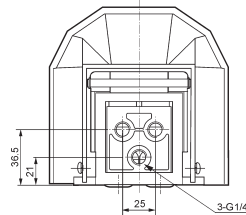
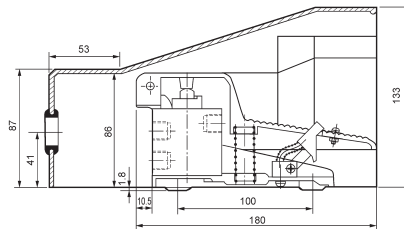
4F210-08L



4F210-08G



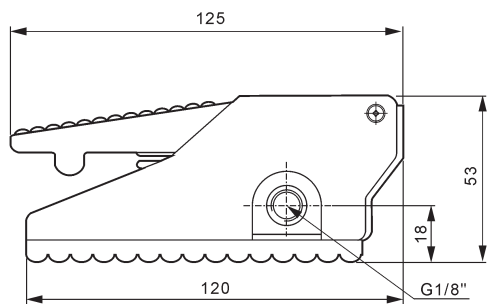
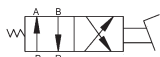
4F210-08LG



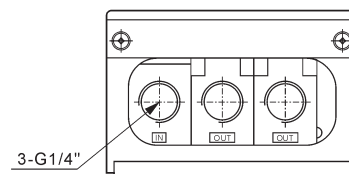
## Foot Valve

● Dimensions

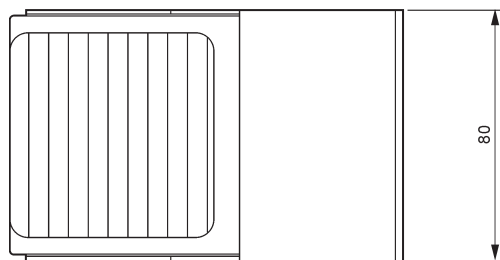
FV420



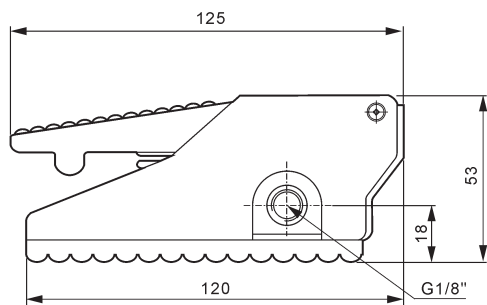
K



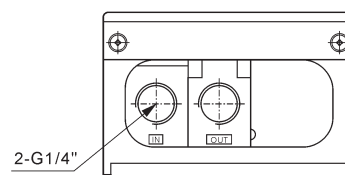
K向



FV320



K



K向

